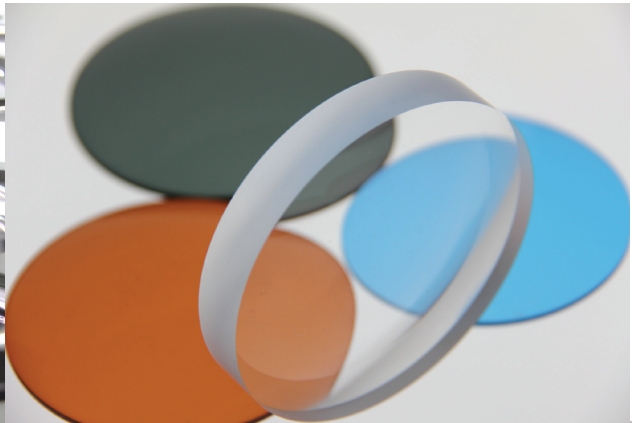
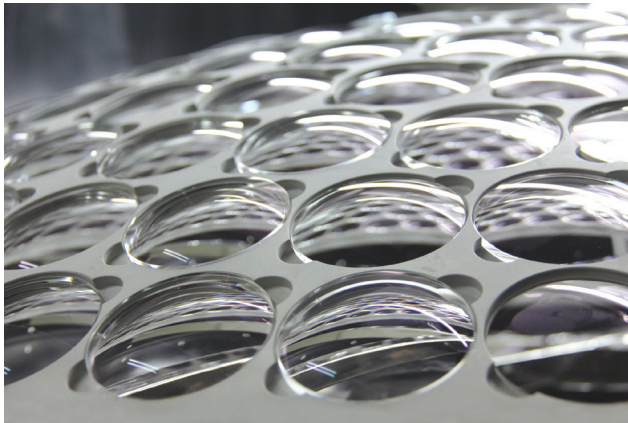


# HOAMING



## The Huaming Experience

---

*Huaming Optical Company Limited was established in 1980 by the entrepreneurial work of our Chairman. The company started by producing mineral lens. From this humble beginning, we have since grown to become a well-diversified company that's domestically and internationally recognized for its range of quality mineral, plastic and free form prescription lenses. Huaming is currently one of the largest companies in the world supplying mineral lenses.*

*The company's headquarters is in Xinji City, Hebei Province, which is about 300 km south of Beijing. The operation in Xinji has 500 employees, including a strong team of qualified engineers dedicated to process and product developments. To meet increased demand for our products, Huaming has established a second production base in Danyang City.*

*In Huaming, we are always happy to listen to customers needs. Over the past 30 years, we have built our success based on trust and long-term partnerships. We offer our partners good quality lenses and excellent services at competitive prices. Our company strategy will continue to emphasize on the needs of the markets, support our partners and grow together in a mutually beneficial relationship.*

## Quality In Motion

---

*Our Chairman has built Huaming on the foundation of quality. Huaming therefore understands that its partners appreciate good quality. As a leading Chinese manufacturer of high quality optical lenses, we are constantly upgrading our process control and inspection standards. Our company operates with the latest technology and control systems to ensure that all lenses can meet exacting international standards and be delivered in the shortest time possible.*

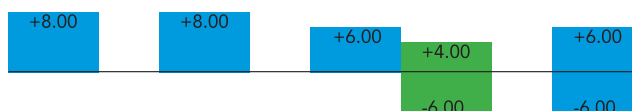
*Huaming produces all lenses according to strict international quality requirements such as the American ANSI, European CE and Japanese JIS standards. Huaming is a certified ISO 9001 company and listed in the American FDA medical device listing.*

Organic Lens	
	Index 1.50 finished single vision
	Index 1.56 finished single vision
	Index 1.60 finished single vision
	Index 1.67 finished single vision
	Polycarbonate 1.598 finished single vision
	Index 1.50 semi-finished single vision
	Index 1.60 semi-finished single vision
Mineral Lens	
	Index 1.523 finished single vision
	Index 1.60 finished single vision
	Index 1.70 finished single vision
	Photochromic 1.523 finished single vision
Progressive	
	Rx freeform progressive lens availability
Treatment	
	Treatment highlights

## Index 1.50 Finished Single Vision Lens

Index [ne]	1.499			
Abbe [ve]	59			
Density [g/cm <sup>3</sup> ]	1.31			
UV cut [nm]	350			
Color	White			
Design	FSV flat curve			
Coating	NC, HC, HMC, SUP, TINT			
Diameters	55/60/65/70			
Power Range	55mm	60mm	65mm	70mm

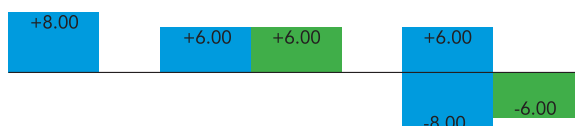
[CYL -2.00]  
[CYL -4.00]



## Index 1.56 Finished Single Vision Lens

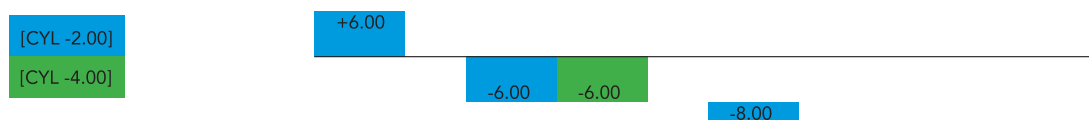
Index [ne]	1.56		
Abbe [ve]	38		
Density [g/cm <sup>3</sup> ]	1.28		
UV cut [nm]	380		
Color	White		
Design	FSV flat curve		
Coating	HMC		
Diameters	65/70		
Power Range	60mm	65mm	70mm

[CYL -2.00]  
[CYL -4.00]

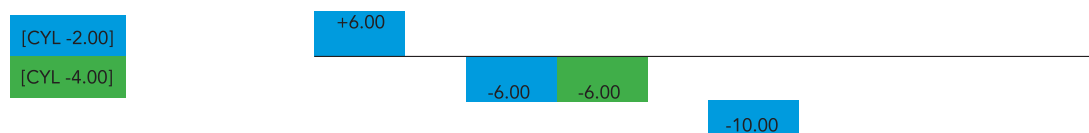


*Index 1.60 Finished Single Vision Lens*

Index [ne]	1.598		
Abbe [ve]	42		
Density [g/cm <sup>3</sup> ]	1.30		
UV cut [nm]	400		
Color	White		
Design	Spheric & Aspheric		
Coating	HMC, SUP, TINT		
Diameters	65/70/72		
Power Range	65mm	72mm	70mm

*Index 1.67 Finished Single Vision Lens*

Index [ne]	1.665		
Abbe [ve]	32		
Density [g/cm <sup>3</sup> ]	1.35		
UV cut [nm]	400		
Color	White		
Design	Aspheric		
Coating	HMC, SUP		
Diameters	65/70/75		
Power Range	65mm	75mm	70mm



## Polycarbonate 1.598 Finished Single Vision Lens

Index [ne]	1.589	
Abbe [ve]	30	
Density [g/cm <sup>3</sup> ]	1.20	
UV cut [nm]	380	
Color	White	
Design	FSV flat curve	
Coating	HMC	
Diameters	65/70	
Power Range	65mm	70mm



*Index 1.50 Semi-Finished Single Vision Lens*

Index [ne]	1.499
Abbe [ve]	59
Density [g/cm <sup>3</sup> ]	1.31
UV cut [nm]	350
Color	White
Design	Spheric
Coating	NC, OBM
Diameters	65/70/75

## Power Range

65mm	B0.50	B2.00	B4.00	B5.00	B6.00	B7.00	B8.00	B10.00
70mm	B0.50	B2.00	B4.00	B5.00	B6.00	B7.00	B8.00	
75mm		B2.00	B4.00	B5.00	B6.00	B7.00	B8.00	

*Index 1.60 Semi-Finished Single Vision Lens*

Index [ne]	1.598
Abbe [ve]	42
Density [g/cm <sup>3</sup> ]	1.30
UV cut [nm]	400
Color	White
Design	Spheric
Coating	NC, OBM
Diameters	70/75

## Power Range

70mm	B0.50	B2.00	B4.00	B5.00	B6.00	B7.00	B8.00	B10.00
75mm	B0.50	B2.00	B4.00	B5.00	B6.00	B7.00		

## Index 1.523 Finished Single Vision Lens

Index [ne]	1.523		
Abbe [ve]	59		
Density [g/cm <sup>3</sup> ]	2.533		
UV cut [nm]	300		
Color	White		
Design	FSV flat curve		
Coating	NC, MC		
Diameters	60/65/70		
Power Range	60mm	65mm	70mm

[CYL -2.00]  
[CYL -4.00]

+8.00 +6.00

+6.00 +6.00  
-6.00 -6.00

+6.00 -4.00  
-6.00 -4.00

## Photochromic Finished Single Vision Lens

Index [ne]	1.523	
Abbe [ve]	59	
Density [g/cm <sup>3</sup> ]	2.533	
UV cut [nm]	330	
Color	Grey, Brown	
Design	FSV flat curve	
Coating	NC,MC	
Diameters	65	
Power Range	65mm	

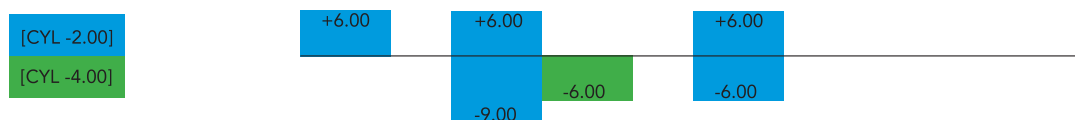
[CYL -2.00]  
[CYL -4.00]

+6.00 +4.00  
-6.00 -4.00



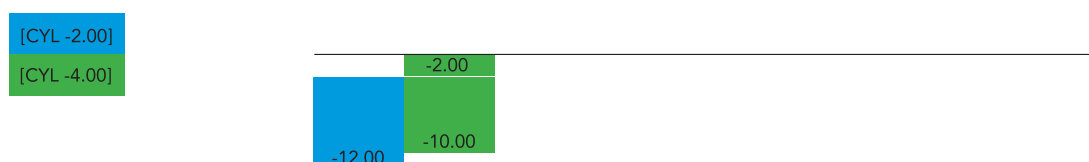
### Index 1.60 Finished Single Vision Lens

Index [ne]	1.604
Abbe [ve]	43
Density [g/cm <sup>3</sup> ]	2.70
UV cut [nm]	330
Color	White
Design	FSV flat curve
Coating	NC, MC
Diameters	60/65/70
Power Range	60mm      65mm      70mm

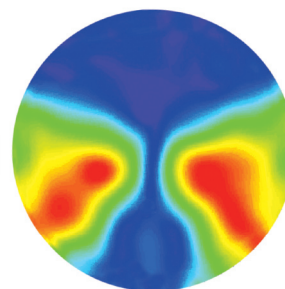


### Index 1.70 Finished Single Vision Lens

Index [ne]	1.705
Abbe [ve]	35
Density [g/cm <sup>3</sup> ]	3.10
UV cut [nm]	330
Color	White
Design	FSV flat curve
Coating	NC, MC
Diameters	60/65/70
Power Range	55mm



## Rx Freeform Progressive Lens Availability:



### Designs

basic progressive design

freeform individually customized progressive design

anti-fatigue design

office design

sports design

### Lens Materials

hard resin 1.50

polarized 1.50

middle index 1.56

polarized 1.67

MR-8 index 1.60

sunsensors 1.56

MR-7 index 1.67

transitions 1.50

ultra index 1.74

transitions 1.60

polycarbonate 1.59

transitions 1.67

trivex 1.53

### Treatments

color tint

UV tint

hardcoat

multicoat

superclean coat

## Treatment Highlights



### Superclean Coating



super hydrophobic & oleophobic

super smudge resistance

super dust repellence

super scratch resistance

super long lifetime

optional anti slip coat for edging

### Multi Coating



hi-performance anti reflection

high transmission rate >99%

uniform AR color quality

excellent durability

### Hard Coating



super scratch resistance

high bayer abrasion rate

impact resistance with primer

excellent durability

### Color Tint



conforms to EN ISO AS ANSI

special colors for different functions

high sun UV400 protection

high lightfastness category

compatible for add on treatments

excellent durability for stock keeping



CHINA

HEBEI HUAMING OPTICAL CO LTD  
01 Dongbaying, Xinji City, Hebei 052360, China  
Tel: +86 311 8396 2888  
Fax: +86 311 8396 2083  
Email: [sales@hmlens.com](mailto:sales@hmlens.com)  
[Http://www.hmlens.com](http://www.hmlens.com)



GERMANY

HUAMING Optical Europe GmbH  
Walther-Nernst-Str. 3, 12489 Berlin, Germany  
Tel +49 30 6098594 20  
Fax +49 30 6098594 29  
Email: [mail@hmlens.de](mailto:mail@hmlens.de)  
[Http://www.hmlens.de](http://www.hmlens.de)